

Community Liaison Group

Lincolnshire Reservoir

8th November 2023



Welcome

- **Kelly – Stakeholder Engagement Lead**
- **Greg – Communications Lead**
- **David – Engineering Lead**
- **Kieron – Socio-economic strategy**
- **Grace – Assistant Project Manager**
- **Simon – Masterplanning Lead**
- **Linda – Public Affairs Engagement Manager**
- **Alex – Engineering Project Manager**

Agenda

- **Welcome and introduction**
- **Aims of the CLG and choosing a chair**
- **Overview of the project developments**
- **Masterplanning overview**
- **Socio-economic strategy**
- **Communications and engagement round up**
- **Summary and thanks**



Aims for the CLG

- Provide a forum of discussion for the ongoing development of proposals for the project
- Allow for regular sharing of information on the project's progress
- Deliver key project updates to the community
- Give the communities we serve regular opportunities to engage with and input on the project, outside of more formal consultation phases



Discussion

Your insight and recommendations for an independent chair.

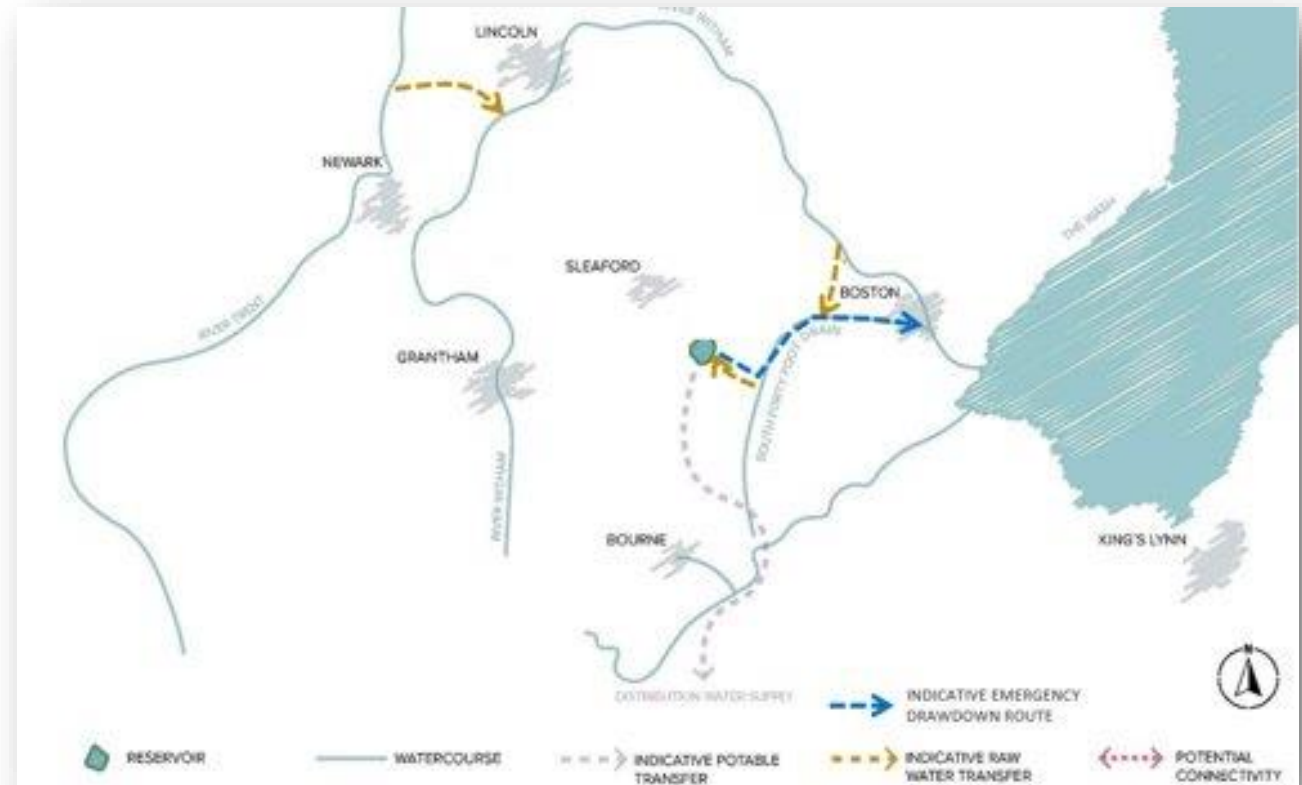
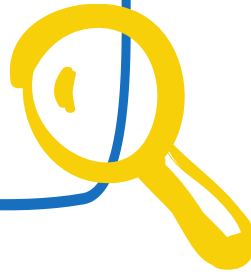
- Responsible for managing the discussion, fielding questions and overseeing participation.
- The Chair will be provided with materials prior to each meeting.
- Role of the Chair:
 - Independent
 - Impartial
 - Relevant experience
 - Representative of both community and Anglian Water
 - Commit to attendance for one year
 - Volunteer



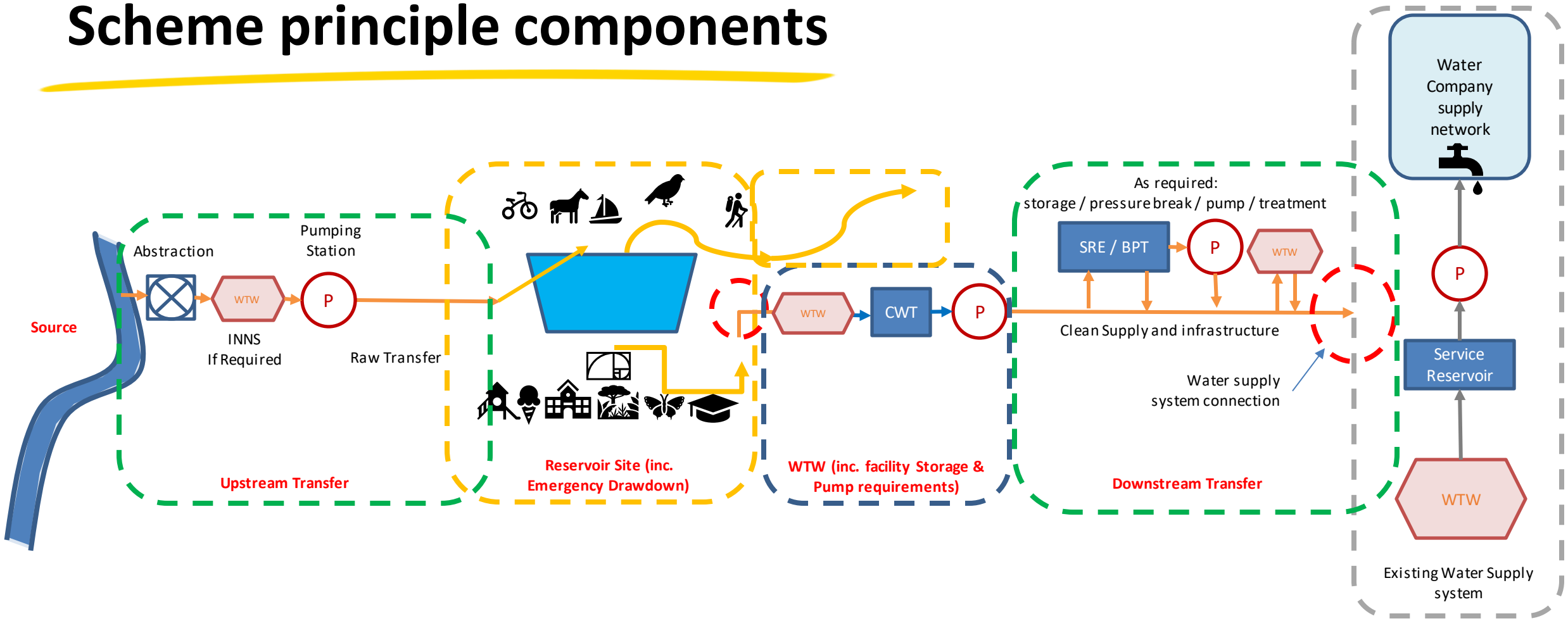
5
mins



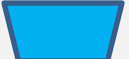



Developing our proposals

- Environmental surveys
- Developing a more detailed design
- Developing proposals to get water to and from the reservoir



Scheme principle components



KEY:		Abstraction		Pump Station		Water supply reservoir	Scheme Element	Level 1 – WBS Element
		Water Quality/ Treatment process plant				Enclosed interim storage reservoir		Transition item to be confirmed

Developing our proposals

Combining early concept with context to give people a better idea of what the reservoir could look like, and the features it could include.





Our ambition

In response to a changing climate and the need to live more sustainable lifestyles as populations grow, we need to transform the way water is managed in the East of England.

The Fens Reservoir and Lincolnshire Reservoir will play a central role in this transformation. They'll secure a resilient supply of water to meet the needs of future generations, while helping to protect and restore the environment.

The reservoirs will be a once in a lifetime investment delivering benefits for biodiversity, recreation, health and wellbeing. Subject to funding and support from regional partners, they could also deliver significant wider benefits for the region.

The reservoir projects will be leading examples of great design. We'll develop and deliver them in collaboration with local people, stakeholders, and regulators at every stage to make sure their concerns are addressed, particularly during construction.

We're committed to making sure that both reservoirs inspire local and regional pride, and deliver a positive legacy for the communities and places they become part of.



Achieving our ambition

Local community and place

We want the reservoirs to be local and regional assets. We'll achieve that by engaging with the local community and following national government guidelines for exemplary design.

Socio-economic opportunity

We take our duty to deliver wider benefits to society seriously. The reservoirs are fundamental to our purpose of bringing environmental and social prosperity to our region.

Biodiversity and the environment

We believe caring for all species and habitats is the right thing to do. We're committed to delivering new water resources that leave nature better off than when we found it.

Leisure and recreation

We're committed to unlocking access to the outdoors and water while meeting our duty to protect the environment, encouraging health, wellbeing and social prosperity.

Transport and traffic

A sustainable transport and traffic plan is a key part of our plans. We'll prioritise safe and sustainable routes of access to the reservoirs for all.

Carbon and renewable energy

We have a track record in delivering significant carbon reductions. We'll make sure the reservoirs are operationally net zero from the day they open.

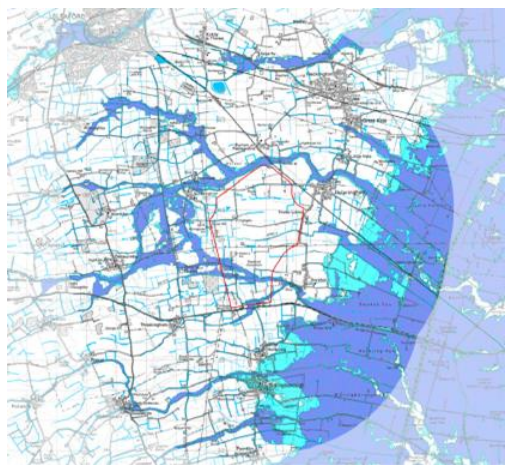
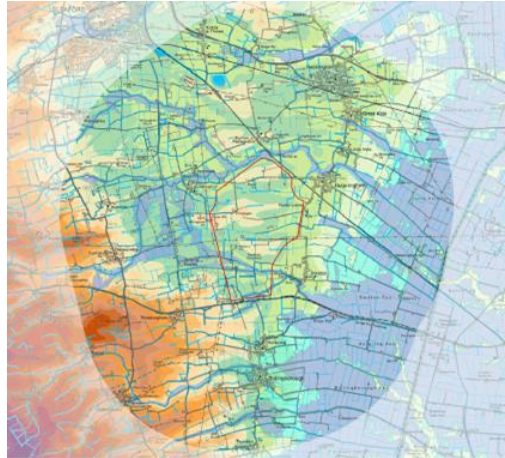
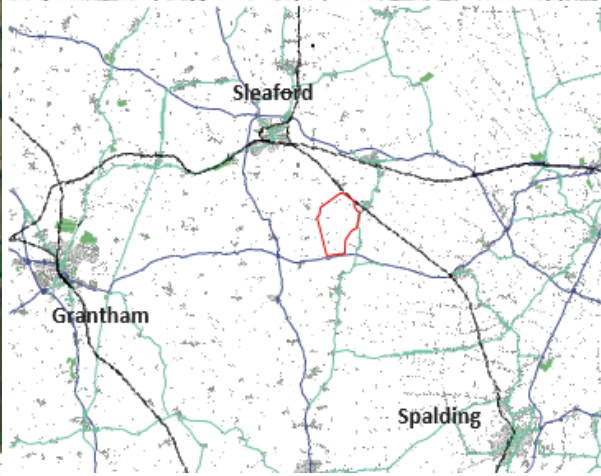
Flood management

Our region is low lying and on the front line of extreme weather patterns. Minimising flood risk will be key to the design of the new reservoirs – and so will building resilience to flooding.

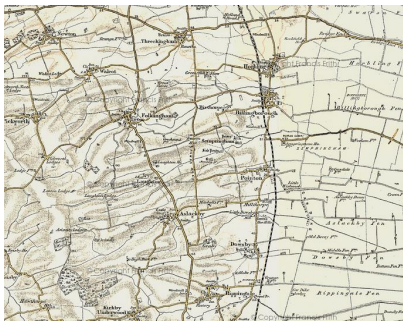
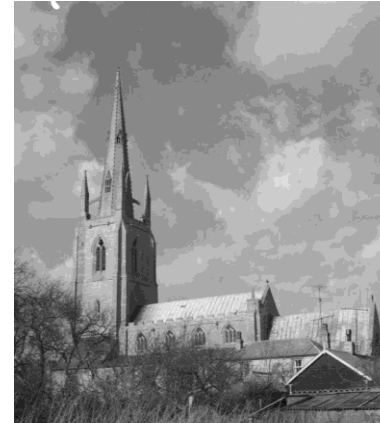
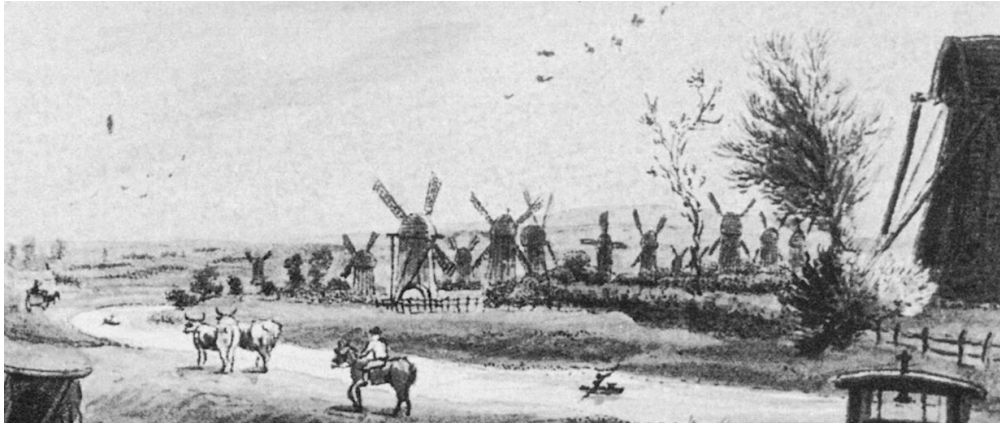
Water quality

We're committed to making sure the reservoirs deliver a sustainable supply of high-quality drinking water that our customers can rely on.

Masterplanning – landscape and geography



Masterplanning – cultural heritage and people



Masterplanning

Consultation feedback has supported and informed our decisions as the design process develops.



CONNECTIVITY WITH NEARBY COMMUNITIES

Preserving existing routes between communities and creating new ones



ACCESS TO NATURE AND WATER

Green space and countryside that can be enjoyed by all



VISUAL IMPACTS INCLUDING EMBANKMENTS

Making sure the reservoir is visually appealing and in keeping with local character



WILDLIFE AND NATURE

Protecting existing habitats and wildlife alongside enhancement



SUPPORTING LOCAL INDUSTRY

Working with farmers and farming organisations to explore opportunities to support agriculture



OUTDOOR RECREATION

Creating new and accessible leisure and recreational facilities

Discussion

What aspects of our masterplanning work interest you?



5
mins

Socio-Economic Strategy

A Socio-Economic Strategy (SES) will support Anglian Water to navigate complex stakeholder requirements and **maximise the delivery of lasting socio-economic benefits** delivered by the project.

The SES will investigate the project's impacts upon these topic areas in **both the construction and operational phases**.

Whilst focusing on socio-economic topic areas, the SES will also need to read-across to wider 'quality of place' issues that may overlap environmental issues with nature-based solutions at the interface.



How will a Socio-Economic Strategy help?

Empower design work to **identify opportunities** to deliver socio-economic benefits and **give socio-economics a seat at the table** and teeth in the optioneering process

Include a **place-based approach** through an understanding of **local needs and context** at the heart of the design and optioneering process

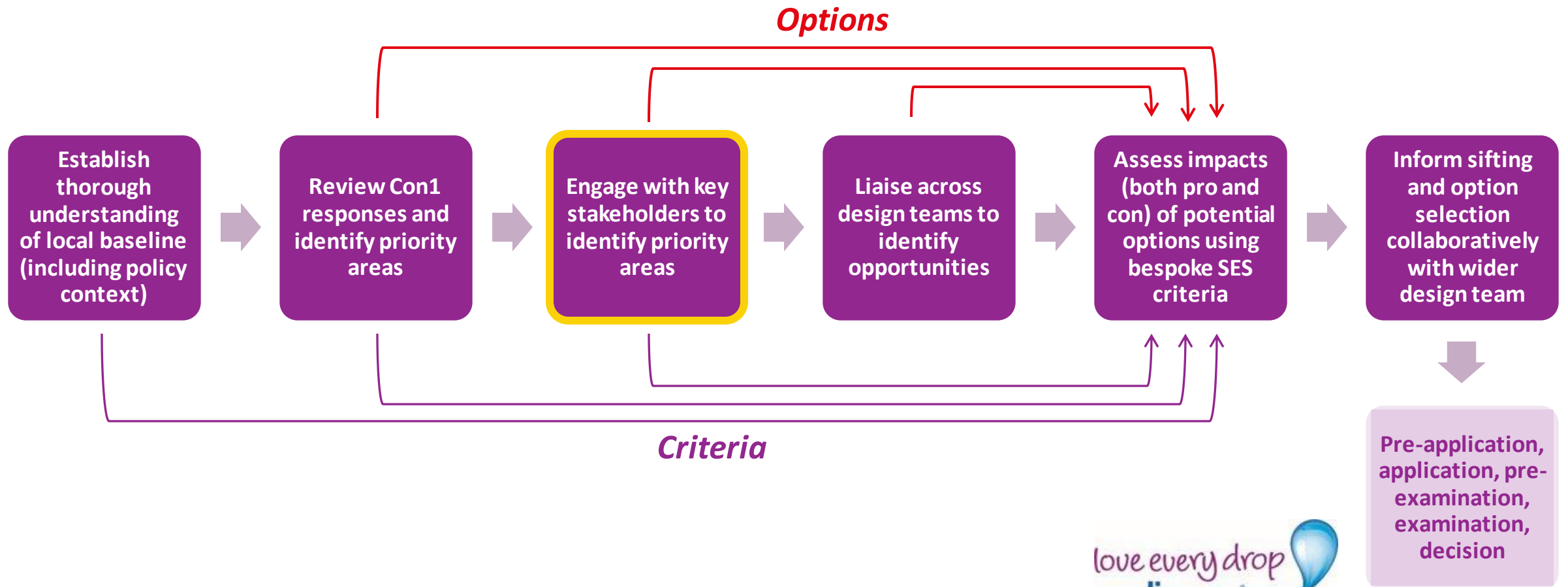
Shine a light on opportunities to **link up with other projects, plans and programmes** being progressed by key stakeholders

Front-loading consideration of potential socio-economic benefits in both construction and operation

Creating clear and actionable **pathways to delivery** (including funding and governance)

Provide clear metrics and methods for **measuring and monitoring socio-economic impacts** and outcomes

How the Socio-Economic Strategy process can influence the scheme's development



Questions for future consideration

1. What socio-economic benefits would you like the project to deliver? Why?
2. What specific activities or facilities would you like to see on site?
3. Are there any wider socio-economic issues that you feel are important?
4. Are there any existing policies, plans, projects, programmes or funds which we should be aware of and potentially integrate with?
5. Of the things you've mentioned above, which are the most important? Why?

If you have any questions, please get in touch with info@lincsreservoir.co.uk

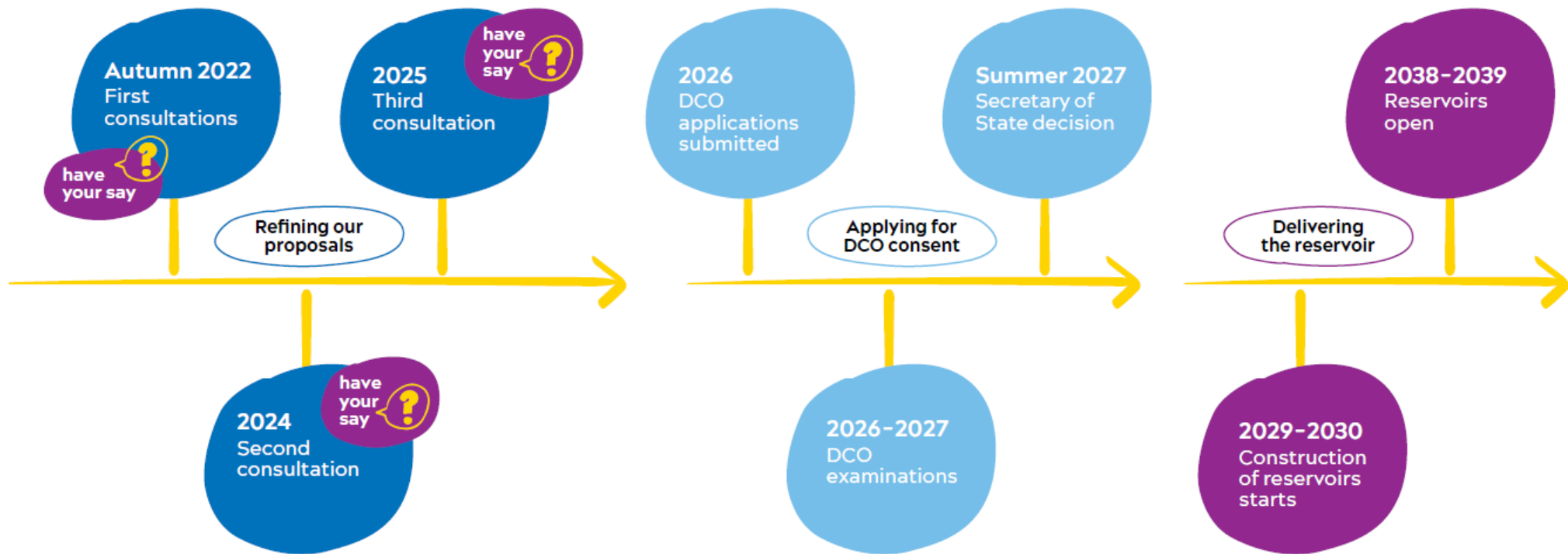
Communications and engagement roundup

Progress since Consultation One:

- E-newsletter
- Delivering our Shared Ambition
- Residential property support scheme



Next steps



Look ahead to next CLG

**What are your expectations for
phase two consultation in 2024?**



Next time

- The next meeting will be held in February
- A record of today will be added to the project website www.lincsreservoir.co.uk
- We will be in contact about electing a group Chair



Thank you!

Further project information:

- www.lincsreservoir.co.uk
- Register for updates - www.lincsreservoir.co.uk/register

